

"My Best Friend"

extra bit  
↓

EB (key + Reel) EB/D

Musical notation with various annotations:

- $C-7$  mid  $EB/D$
- $EB$
- $EB$
- $EB$  low  $EB$  to  $EB$  +  $5$   $B/D$
- $C-7$
- $B^b$
- $EB$
- $EB$
- $EB$

Chorus  $EB$

$EB$

$EB$

$EB$   $EB$  (riff)

$EB$   $B^b$   $G$

$EB$   $F$   $EB$   $EB/D$   $EB$   $B^b$   $C-7$   $B/D$

$C-7$   $EB/D$   $EB$   $EB/E$   $(B^b - EB/B B^b)$

$C-11$   $B^b$

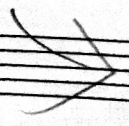
$G^b/Ab$  m-dot  $(B^b/F)$   $G^b$   $B^b/E$

$G^b/Ab$  m-dot

$G^b$   $B^b/E$

SUS

$B^b$



Handwritten musical notation on a page with multiple staves. The notation includes various notes, chords, and annotations.

Annotations at the top of the page include:

- $G^b 2$
- $D^b$  add 4
- $D^b$  add 4
- $A^b$

The notation is organized into sections by a large vertical line. The first section contains:

- A staff with a treble clef and notes, with the annotation "Melody" written above it.
- A staff with a bass clef and notes, with the annotation "D<sup>b</sup>" written above it.
- A staff with a bass clef and notes, with the annotation "A<sup>b</sup>" written above it.

The second section, separated by a vertical line, contains:

- A staff with a treble clef and notes, with the annotation "G<sup>b</sup>/D<sup>b</sup>" written above it.
- A staff with a bass clef and notes, with the annotation "7. RH" written above it.

The notation includes various musical symbols such as notes, stems, beams, and clefs. There are also some scribbles and corrections throughout the page.